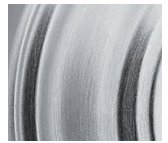


WINSTON

Box Pack Specifications



SATIN NICKEL



SATIN CHROME

AVAILABLE FUNCTIONS:



Passage



Privacy



Entry



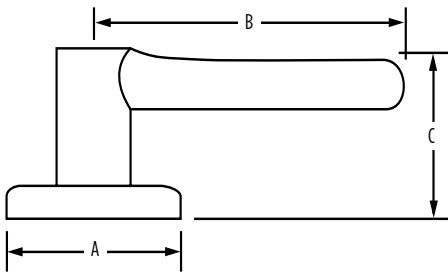
Inactive

WINSTON	15 Satin Nickel	26D Satin Chrome
Passage 20 Min	<input type="checkbox"/>	<input type="checkbox"/>
Passage 3 Hour	<input type="checkbox"/>	<input type="checkbox"/>
Privacy	<input type="checkbox"/>	<input type="checkbox"/>
Entry	<input type="checkbox"/>	<input type="checkbox"/>
Inactive	<input type="checkbox"/>	<input type="checkbox"/>



SPECIFICATIONS

Door Prep	Cross Bore 2-1/8" Edge Bore 1" Latch Face 1"x2-1/4"
Backset	Adjustable to 2-3/8" or 2-3/4"
Door Thickness	1-3/8"-1-3/4" doors standard thickness
Cylinder	KW1 P&T (5 pin)
Faceplates	1"x2-1/4" Includes square corner and drive-in
Strikes	2-1/4" full lip. Includes square corner and radius corner
Bolt	1/2" throw. Nickel plated
Door Handing	Reversible for right or left-handed doors
ANSI/BHMA	A156.5 Grade 3
ADA	N/A
UL	Fire rating available, see specific product for availability
ASTM	All Weiser product meets ASTM E 331 water penetration testing



Dimensions	A	B	C	C (Keyed)
Winston	2 9/16"	3 5/8"	2 3/8"	2 3/8"

WARRANTY:

Safelock by Weiser™ products provide a "Lifetime Mechanical & 5 Year-Limited Finish Warranty" that covers all defects in material and workmanship. For more information, please visit ca.weiserlock.com/en/warranty/.